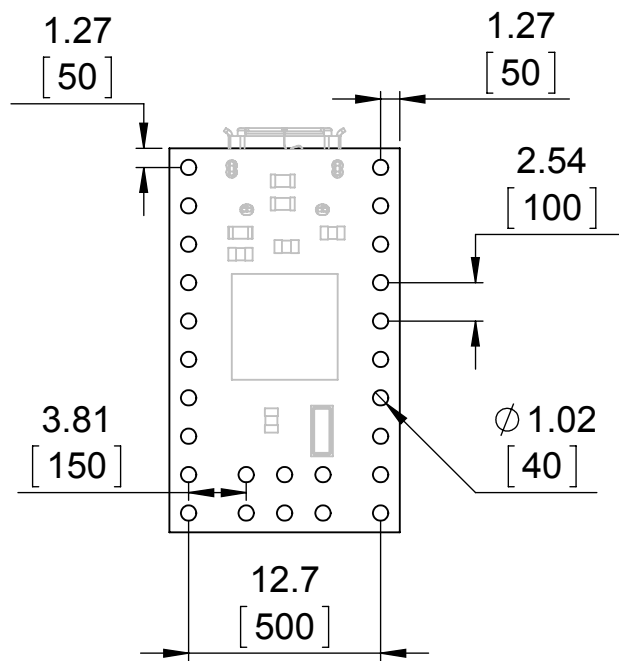
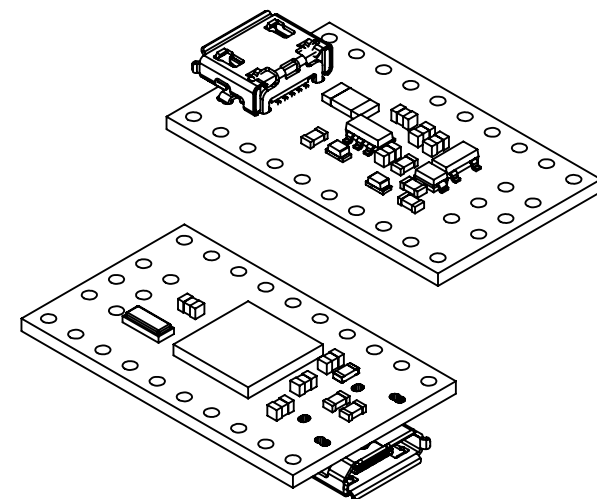


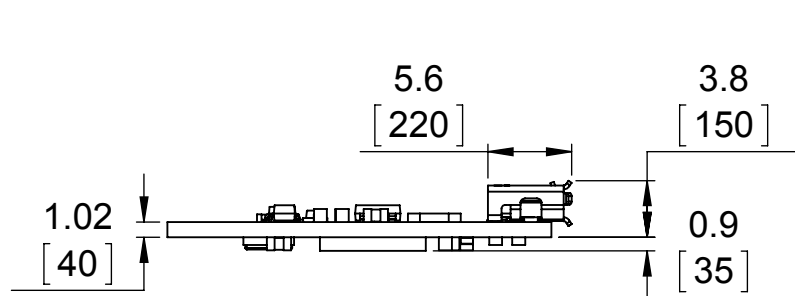
1 Board dimensions
Scale 2:1



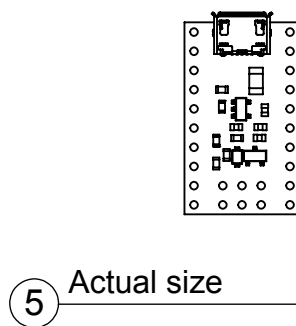
2 Connector callouts
Scale 2:1



3 Isometric view
Scale 2:1




4 Profile
Scale 2:1



5 Actual size
Scale 1:1

1. To get the specified scale, select 100% in print settings.
2. Drill location tolerance: ± 0.1 [± 5].
3. Board edge tolerance: ± 0.3 [± 10].

http://www.pololu.com/product/3101	
Name: A-Star 32U4 Micro	Item number: 3101
Drawing date: 22 April 2014	
Units: mm [mil]	PCB dev code: ac01a
 © 2014 Pololu Corporation	