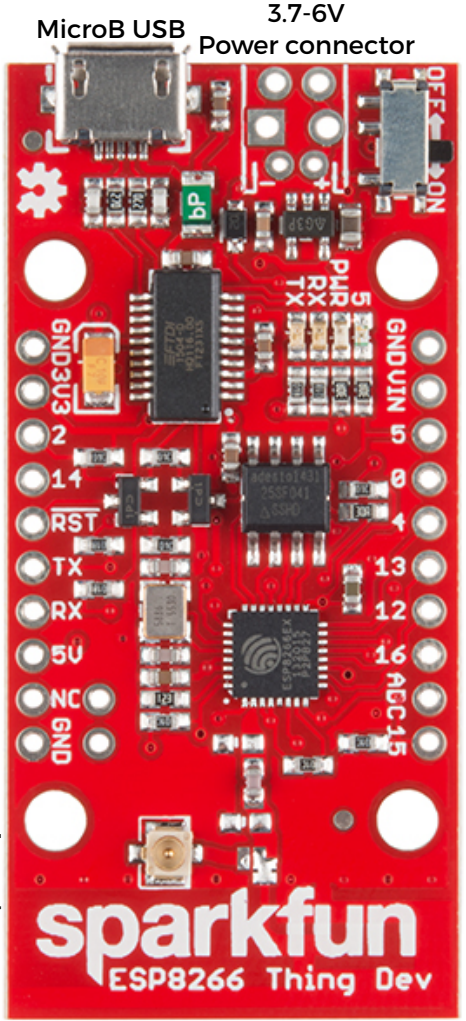


# ESP8266 Thing Dev Board (WRL-13711)

Arduino add-on available  
80MHz

Name	Arduino
Power	ADC
GND	Serial
Control	Misc



	<b>GND</b>	GND
	<b>3.3V</b>	3V3
SDA	D2	2
SCL/SCLK	D14	14
	<b>Reset</b>	<b>RST</b>
TX	D7	TX
RX	D8	RX
	<b>V_USB</b>	5V
	Not Connected	NC
	<b>GND</b>	GND

**u.fl antenna connector**  
Not Connected  
To use swap the solder jumper

Power switch

**GPIO0**  
On bootup will run program if high and bootloader if low  
Tied to DTR to run bootloader when reset

<b>GND</b>	<b>GND</b>	
Vin	Vin	
5	D5	LED
0	D0	Used in reset
4	D4	
13	D13	MOSI
12	D12	MISO
16	D16	XPD
ADC	A0	10-bit 1V
15	D15	

**Jumpers on back**  
PWR-LED - cut to disconnect power LED  
SLEEP-EN - Connect RST to XPD to enable sleep (disables programming)

PCB Antenna

**Power (ESP8266 Thing)**  
Vin: 3.7V-6V  
VUSB: 5V  
VCC:3.3V @500mA  
Max 12mA per I/O pin

**Typical Power (ESP8266 module)**  
Transmit 135-215mA  
Receive 60-62mA  
Standby 0.9mA  
Deep sleep 10uA

**LEDs**  
Power: Red  
User (pin 5): Blue  
RX: Yellow  
TX: Green  
**Wi-Fi**  
802.11 b/g/n  
Wi-Fi Direct (P2P) soft AP

sparkfun.com  
CC BY SA