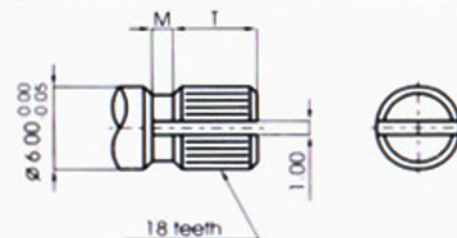
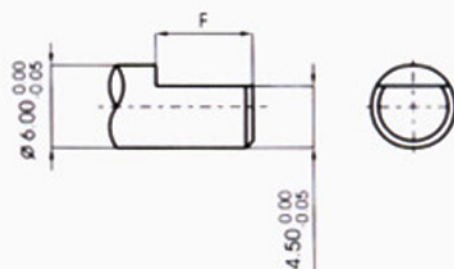
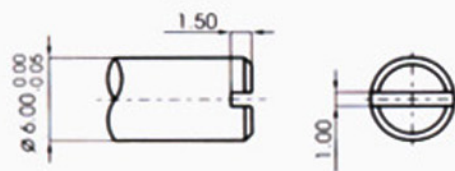


Z	1	2	3
H	10	12.5	14.5

Y	1	2	3	4			
W	7	5	7	5			
K	7.5	7.5	6	6			



S TYPE:

X	Q	R	S				
L	15	20	25				

F TYPE:

X	A	B	C				
L	15	20	25				
F	7	12	12				

KQ TYPE:

X	2	3	4				
L	15	20	25				
T	6	8	12				
M	1	2	4				

Mechanical characteristics:機械的性能:

Total rotational angle 總旋轉角度	$300^{\circ} \pm 10^{\circ}$
Rotational torque 旋轉力矩	$2 \sim 20\text{mN.m}$ ($20 \sim 204\text{gf.cm}$)
Rotation stopper strength 止擋強度	0.3N.m (3kgf.cm)
Push pull strength 軸推拉強度	80N (8kgf) max.
Click torque C.C. 扭力	$5\sim 30\text{mN.m}$ ($51\sim 305\text{gf.cm}$)

Electrical characteristics: 電氣的性能:

Total resistance 總阻值	B:5K Ω ~1M Ω other than B:5K Ω ~500K Ω (B以外)
Total resistance tolerance 總阻偏差	$\pm 20\%$ more than 1M Ω $\pm 30\%$
Rated power 額定功率	B:0.08W other than B:0.04W (B以外)
Max. operating voltage 最高使用電壓	B:150V AC other than B:100V AC (B以外)
Resistance taper 阻值規律	A, B, C
Residual resistance 殘留阻值	$R \geq 250K \Omega$ 0.1% max. of total resistance $10K \Omega < R < 250K \Omega$ 20 Ω max. $R \leq 10K \Omega$ 10 Ω max.
Insulation resistance 絕緣電阻	more than 50M Ω at DC 500V
Gang error 同步誤差	-40 ~ 0dB $\leq \pm 3$ dB

Durability:耐久的性能:

Rotational life

旋轉壽命

15,000 cycles