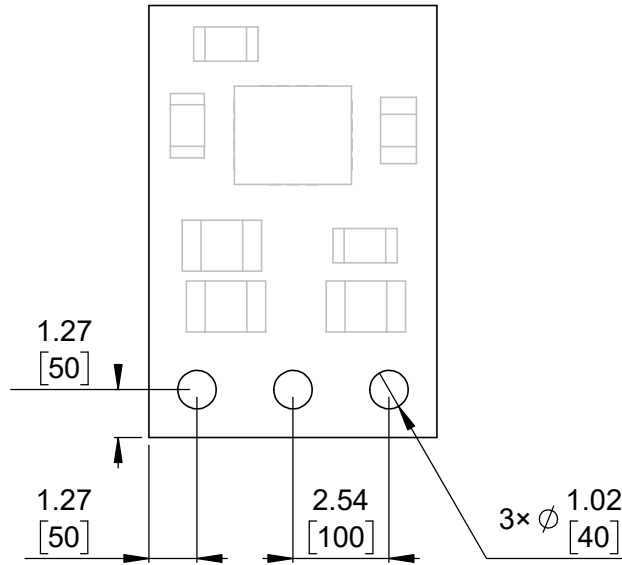
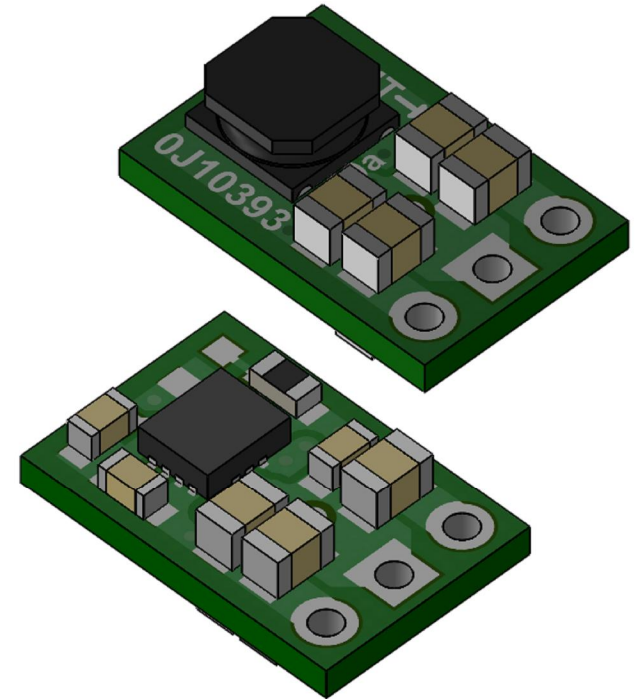


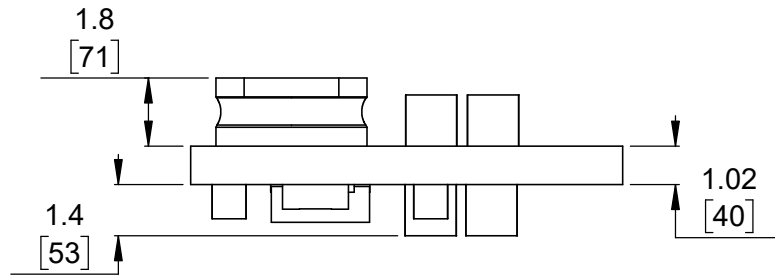
① Board dimensions (top view)  
Scale 5:1



② Connector callouts (bottom view)  
Scale 5:1



③ Isometric view  
Scale 5:1




④ Profile  
Scale 5:1



⑤ Actual size  
Scale 1:1

1. To get the specified scale, select 100% in print settings.
2. Drill location tolerance:  $\pm 0.1$  [ $\pm 5$ ].
3. Board edge tolerance:  $\pm 0.3$  [ $\pm 10$ ].

<https://www.pololu.com/product/2836>

Name: Pololu 5V Step-Up/Step-Down Voltage Regulator S9V11F5		Item number: <b>2836</b>
Drawing date: 13 April 2017	Dev code: reg20a	 © 2017 Pololu Corporation
Units: mm [mil]	Material: mixed	